

**Huebsch is the answer.**



**OPL  
50 - 75 lb LoadStar™  
and 55 lb DryStar™  
Tumble Dryers**





## Huebsch is the answer.

Anybody can sell you laundry equipment and discuss the merits of each nut and bolt. However, at Huebsch, our priority is answering your questions about how working with us will make your business easier to run and more profitable.

Customers have selected Huebsch products for their ease of use, supreme durability and because owning a Huebsch product brings a service and support network that's unmatched within the industry. For profitability, reliability and ease of use, Huebsch is the answer.

## Big Performance

**Why are 50 and 75 lb Huebsch LoadStar™ commercial tumble dryers a good fit for my laundry?**

### **Extra capacity.**

Huebsch LoadStar™ 50 and 75 lb tumble dryers offer the sizable capacity to effectively meet the needs of most medium and large scale laundries.

### **Highly efficient.**

Huebsch large capacity tumble dryers give you not only extra capacity, but also superior efficiency with a high performance heater box. Sealed cylinder rims and a concentrated airflow pattern help to keep utility costs down and the laundry yielding maximum throughput volumes.

## Additional Features

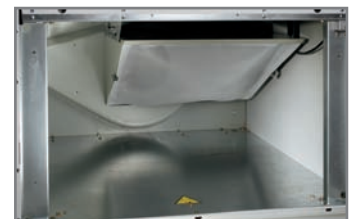
**Beyond efficiency, what LoadStar™ features help improve my operation overall?**

### **Large door openings.**

Huebsch is the answer for fast loading and unloading with 26 7/8" door openings. When you're able to load and unload quickly, your laundry is able to keep loads moving.

### **Easy to clean.**

A self-cleaning lint screen means fast, efficient lint removal from the tumble dryer's large storage area.



## Excellent Options

What other options make LoadStar™ models the right choice?

### An extra line of defense.

Huebsch offers its Combustion Auto Response Equipped (C.A.R.E.) system as an option on LoadStar™ and DryStar™ tumble dryers. C.A.R.E. monitors for excessive cylinder temperatures and sprays water on the load should it register an abnormally high reading. A "system active" signal also can be sent to a property's alarm system or another device.



### Tangle tamer.

A reversing option (offered on 3 phase models) is particularly useful for laundries washing sheets or large table linens. The reversing cylinder helps eliminate tangling of such items, saving employees valuable time.

## A Great Finish

How will these tumble dryers help my laundry deliver fantastic finished results?

### Staying in control.

LoadStar™ and DryStar™ models can be equipped with either Huebsch's extremely user-friendly Micro-Display control or Dual Digital control. The Micro-Display control features four preset drying cycles and offers the ability to further customize programs. This programmability enables you to get the results you desire every load with no wasteful overdrying. With the Dual Digital control, operators can set drying time (0-60 minutes), cool down time (0-15 minutes) and temperature (high, medium, low, no heat). Additional user-friendly features include a one-touch cycle repeat, automatic anti-wrinkle extended tumble and time remaining display.



## Better Results, Small Package

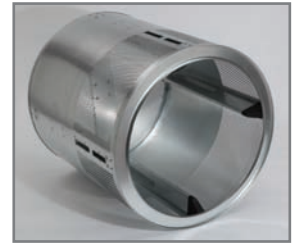
How can my laundry add drying capacity without taking up more precious floor space?

### New 55 lb DryStar™ features increased capacity.

While Huebsch's newest tumble dryer offers five more pounds of capacity than a 50 lb tumble dryer it's 4" narrower, enabling it to fit easily through a standard 36" door opening. It's also more than a foot shorter.

### A perfect blend of speed and efficiency.

Laundries benefit from the tumble dryer's axial airflow process, which helps it out-perform many competing 50 lb radial airflow tumble dryers in both speed and efficiency.



## Unmatched Durability

Commercial laundry equipment is no small expense; I want peace of mind my equipment will last well into the future. What sets Huebsch apart from other brands in terms of reliability?

### Not just standing behind our equipment, but standing beside you and your business.

Our made-in-America product comes with an industry-leading bond. The entire machine receives Huebsch's standard three-year warranty. In addition, Huebsch has more service representatives in the field than most brands have in their whole organization. Huebsch support is further bolstered by an online component and a help line that takes 100,000 calls per year.



\*Parts only, labor not included. See Huebsch Warranty Bond for specifics.

# 50, 55 and 75 lb Tumble Dryer Specifications

| Models                             | HT050  | HT055  | HT075  |
|------------------------------------|--|--|--|
| Control Options                    | Micro-Display (OM), Dual Digital (QT)  | Micro-Display (OM), Dual Digital (QT)  | Micro-Display (OM), Dual Digital (QT)  |
| Dry Weight Capacity - lb (kg)      | 50 (22.7)  | 55 (24.9)  | 75 (34)  |
| Width - in (mm)                    | 38 5/8" (981)  | 34 1/2" (876)  | 38 5/8" (981)  |
| Depth - in (mm)                    | 48 1/4" (1226)   | 53 5/8" (1362)   | 54 1/4" (1378)   |
| Height - in (mm)                   | Gas & Electric: 76 5/8" (1946)<br>Steam: 80" (2032)  | 66 3/4" (1695)   | Gas & Electric: 76 5/8" (1946)<br>Steam: 80" (2032)  |
| Cylinder Depth - in (mm)           | 30" (762)  | 35" (889)  | 36" (914)  |
| Cylinder Diameter - in (mm)        | 37" (940)  | 33" (838)  | 37" (940)  |
| Cylinder Volume - cu. ft. (liters) | 18.6 (528)   | 17.3 (491)   | 22.4 (634)   |
| Door Opening Size - in (mm)        | 26 7/8" (683)  | 26 7/8" (683)  | 26 7/8" (683)  |
| Air Outlet Diameter - in (mm)      | 8" (203)   | 8" (203)   | 8" (203)   |
| Airflow - cfm (liters/sec.)        | 750 (354)  | 50 Hz: 600 (283)<br>60 Hz: 700 (330)   | 50 Hz: 750 (354)<br>60 Hz: 920 (434)   |
| Energy Data                        | Gas Models:<br>50 Hz: 130,000 Btu/hr (38.1 kW)<br>60 Hz: 130,000 Btu/hr (38.1 kW)<br>Steam Models:<br>At 100 psi (6.9 bar): 5.1 BHP<br>Electric Models:<br>30 kW   | Gas Models:<br>50 Hz: 102,000 Btu/hr (29.9 kW)<br>60 Hz: 112,000 Btu/hr (32.8 kW)<br>Steam Models:<br>N/A<br>Electric Models:<br>27 kW | Gas Models:<br>50 Hz: 165,000 Btu/hr (48.3 kW)<br>60 Hz: 165,000 Btu/hr (48.3 kW)<br>Steam Models:<br>At 100 psi (6.9 bar): 6.1 BHP<br>Electric Models:<br>30 kW |
| Electrical Specifications          | Non-Rev<br>100/200-220/60/1 N/A<br>120/208-240/60/1 N/A<br>120/60/1 9.3<br>200-208/240/60/1 5.1/5.1<br>200-208/240/60/3 2.8/2.8<br>380/60/3 1.6<br>440/60/3 (Steam only) 1.4<br>460-480/60/3 1.4<br>100/200/50/1 N/A<br>230-240/50/1 6.3<br>200/50/3 3.3<br>230-240/50/3 3.1<br>380/50/3 N/A<br>400-415/50/3 N/A<br>380/400-415/50/3 1.6/1.6 | Non-Rev<br>9.8/4.9<br>9.2/6.5<br>N/A<br>N/A<br>4.0/3.9<br>N/A<br>N/A<br>10.0/6.2<br>5.5<br>N/A<br>N/A<br>2.0<br>2.0<br>N/A             | Non-Rev<br>N/A<br>N/A<br>13.8<br>7.6/7.6<br>3.8/3.8<br>1.8<br>1.9<br>1.9<br>N/A<br>6.7<br>3.5<br>3.5<br>N/A<br>N/A<br>1.8/1.8                                    |
| Plumbing Connection - in (mm)      | Gas Models: 1/2" - NPT<br>Steam Models: 3/4" - NPT   | Gas Models: 1/2" - NPT<br>Steam Models: N/A  | Gas Models: 1/2" - NPT<br>Steam Models: 3/4" - NPT   |
| Shipping Dimensions                | Width 41 1/2" (1054)<br>Depth 52 1/8" (1323)<br>Height 81" (2057)  | 35 1/2" (902)<br>59" (1499)<br>72" (1829)  | 41 1/2" (1054)<br>56 3/8" (1433)<br>81" (2057)   |
| Net Weight - lb (kg)               | 545 (247)  | 435 (197)  | 615 (279)  |
| Shipping Weight - lb (kg)          | 602 (273)  | 476 (216)  | 677 (307)  |
| Agency Approvals                   | cCSA <sub>US</sub> , CE, CSA Star, CSA Flame   | cCSA <sub>US</sub> , CE, CSA Star, CSA Flame   | cCSA <sub>US</sub> , CE, CSA Star, CSA Flame   |

Tumble dryer models are made to suit a variety of electrical service characteristics. See your Huebsch distributor for specifications. For further details on installation, refer to Installation, Operation and Maintenance instructions supplied with the tumble dryer. USA and Canada models are certified by C.S.A International.

For the most accurate information, the installation guide should be used for all design and construction purposes. Due to continuous product improvements, design and specifications subject to change without notice. The quality management system of Alliance Laundry Systems' Ripon facility has been registered to ISO 9001:2000.

Printed in the U.S.A.

©Copyright 2010 Alliance Laundry Systems LLC