

HEATED ROLL
FLATWORK FINISHERS



SERIOUS ABOUT LAUNDRY.

UniMac

UNIMAC HEATED ROLL FLATWORK FINISHER

QUALITY

UniMac has been recognized around the world as the leading manufacturer of commercial laundry equipment. We produce, sell and support more commercial washers and dryers in North America than any other company, and we continue to expand globally. Our product is built to provide the highest quality finish, operate with the highest efficiency and provide the user with the details that make a difference.

Available in seven models, our heated roll flatwork finishers deliver seriously superior results for any size operation. Their quality construction does more than ensure durability and lasting performance – it will also help you save on energy costs. Thicker steel and a 300° angle of contact allow our machines to achieve a lower Btu consumption, while our specialized micro control allows for a wide array of energy-saving settings.

CONTROL

The micro control allows for pre-sets of temperature and speed settings, ensuring the precise speed for the linen type and moisture content. When finished at the end of a day, simply press the STOP button and the control will allow the roll to continue to turn until it reaches a safe temperature of 176° F before the roll completely stops. When you start the day, the control turns the roll at the lowest speed until it reaches 176° F to allow for more efficient energy use.



SELECTING THE PROPER SIZE

While our units are available with 8" or 13" or 20" diameter rolls, selecting the proper size will make the job easier. The larger the diameter of the roll, the faster the operating speed since the linen is in more contact with the heated surface. The ironer's finishing length should be slightly larger than the width of the linen you will finish. Most linens for tables of four will require a 63" width. If finishing sheets or banquet tablecloths, you may require a 126" width.



UD08/13



UD20

LOW MAINTENANCE

The heated roll requires no waxing when used on a daily basis. The permanently lubricated bearings on the 8" and 13" heated roll finishers can save hours of maintenance every month while keeping your machine operating like it just came from the factory.



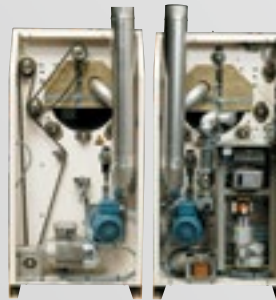
FINISHED GOODS FINGERS

Another unique advantage of UniMac is the finished goods fingers. To ensure the linens remove themselves from the heated roll without wrapping around the roll, UniMac installs a row of fingers to keep your finisher running without destroying linens.

ENERGY EFFICIENT

Our low Btu consumption ratings will save you money. To maintain the heat on the steel roll that presses the linen, we use thicker steel for a more consistent temperature.

While the heat is produced near the top of the unit, we place our dual exhaust fans toward the bottom to remove less heat from the roll. In combination with this, we totally enclose the entire cabinet to maintain more insulation around the heated roll. Our 300° angle of contact allows the linens a longer contact with the heated roll, allowing less energy to be consumed.



SIDE VIEWS

SAFETY FEATURES

Designed to be as safe as possible, a stop bar prevents operators from placing their hands too close to the machine, and a sophisticated alarm system indicates when any of the components are not working properly. Alarms include airflow safety, thermal motor, speed regulator, ignition and overheating.

If the machine's power is interrupted when a linen is being processed, the linen must be removed or it risks damage. We provide a manual crank to easily remove the linen before it is damaged.



FINISHED GOODS FINGERS

DETAILS MAKE THE DIFFERENCE

Other user-friendly features include:

Feeding tray to assist in feeding napkins or longer items.

Our no-staple, nomex feed ribbons are designed to last longer and always look good.

Our return ribbons, which are connected with staples, are covered with nomex to protect your linens from damage from the staples as they get worn.

The slanted return trough is more user-friendly than a flat return table where finished goods often get wrinkles prior to the operator removing them from the finisher.

The compact design allows for the unit to be installed just two inches from the back wall.

WARRANTY

UniMac products are of the highest quality. Our limited parts warranty includes non-textile components against failure from defect in material or workmanship during the first year.



MODELS	UD08F055	UD13F063	UD13F079	UD13F126	UD20F075	UD20F098	UD20F126
Roll Diameter - in (mm)	8" (200)	13" (325)	13" (325)	13" (325)	20" (500)	20" (500)	20" (500)
Finishing Width - in (mm)	55" (1400)	63" (1600)	78" (2000)	125" (3200)	75" (1900)	98" (2500)	126" (3200)
Ironing Speed - ft/m (m/m)	3-15 (1-4.5)	3-30 (1-9)	3-30 (1-9)	3-30 (1-9)	3-30 (1-9)	3-30 (1-9)	3-30 (1-9)
Width - in (mm)	74" (1878)	86" (2192)	100" (2542)	154" (3910)	117" (2974)	141" (3574)	168" (4274)
Depth - in (mm)	17.5" (444)	26" (660)	26" (660)	34" (860)	42" (1070)	42" (1070)	42" (1070)
Height - in (mm)	52.6" (1335)	43.8" (1112)	43.8" (1112)	43.8" (1112)	46.1" (1170)	46.1" (1170)	46.1" (1170)
Roll Motor - HP (kW)	.33 (.25)	.49 (.37)	.66 (.49)	.66 (.49)	.83 (.62)	1.17 (.87)	1.17 (.87)
Roll Exhaust Motor - HP (kW)	1 x .12 (.09)	2 x .16** (2 x .12**)	2 x .16 (2 x .12)	2 x .16 (2 x .12)	2 x .34*** (2 x .25***)	2 x .34 (2 x .25)	2 x .34 (2 x .25)
Roll Exhaust Duct - in (mm)	1 x 3.27" (83)	2 x 3.86*** (2 x 98**)	2 x 3.86" (2 x 98)	2 x 3.86" (2 x 98)	2 x 6**** (2 x 153***)	2 x 6" (2 x 153)	2 x 6" (2 x 153)
Power Extraction (m ³ /h)	300	500	1000	1000	600 (gas: 1200)	1200	1200
Hourly Productivity - lb/hr (kg/hr)	26-30 (12-14)	44-66 (20-30)	66-88 (30-40)	88-110 (40-50)	110-154 (50-70)	132-176 (60-80)	176-265 (80-120)
GAS HEATING							
Maximum Gas Input - Btu (kW)	N/A	76,792 (23)	102,340 (30)	119,425 (35)	136,453 (40)	187,623 (55)	235,495 (69)
Gas Inlet - in (mm)	N/A	3/4" (14)	3/4" (14)	3/4" (14)	1" (22)	1" (22)	1" (22)
Electrical Requirements • Circuit Breaker	N/A	120/60/1 • 15	120/60/1 • 15	120/60/1 • 15	120/60/1 • 15	120/60/1 • 15	120/60/1 • 15
ELECTRIC HEATING							
Capacity Resistances - HP (kW)	14 (10.5)	21 (16)	28 (21)	48 (36)	42 (31.5)	54 (40.5)	72 (54)
Electrical Requirements • Circuit Breaker	208 - 240/60/3 • 50	208 - 240/60/3 • 60	208 - 240/60/3 • 80	N/A	208 - 240/60/3 • 110	208 - 240/60/3 • 150	208 - 240/60/3 • 200
STEAM HEATING							
Steam Inlet - in (mm)	N/A	N/A	N/A	N/A	3/4" (19.5)	3/4" (19.5)	3/4" (19.5)
Condensate Return - in (mm)	N/A	N/A	N/A	N/A	1/2" (12.7)	1/2" (12.7)	1/2" (12.7)
Hourly Consumption - lb/hr (kg/hr)	N/A	N/A	N/A	N/A	110 (50)	147 (67)	187 (85)
Min.-Max. Steam Pressure - psi (bar)	N/A	N/A	N/A	N/A	145 (10)	145 (10)	145 (10)
Electrical Requirements • Circuit Breaker	N/A	N/A	N/A	N/A	120/60/1 • 15	120/60/1 • 15	120/60/1 • 15
Shipping Weight - lb (kg)	418 (190)	1320 (599)	1474 (669)	2095 (950)	2171 (985)	2799 (1270)	3428 (1555)
Approvals	ETL, CE	CSA, ETL, CE	CSA, ETL, CE	CSA, ETL, CE	CSA, ETL, CE	CSA, ETL, CE	CSA, ETL, CE

* Removal of trays will allow 32" door access on all models. ** One motor on electric models. Electric heated models not available in Canada. *** One motor on steam models.



To learn more, or to find a distributor in your area, visit UNIMAC.COM
Alliance Laundry Systems - Shepard St, Ripon WI 54971 - 1.800.587.5458

Consult your UniMac distributor for more details. For the most accurate information, the installation guide should be used for all design and construction purposes. Due to continuous product improvements, design and specifications are subject to change without notice. The quality management system of Alliance Laundry Systems' Ripon facility has been registered to ISO 9001:2008.

© 2013 Alliance Laundry Systems. Printed in the U.S.A.



SERIOUS ABOUT LAUNDRY.

AU13-0007