

**UW Series Hardmount  
Washer-Extractors**

**UniMac**<sup>®</sup>

**35 lb Washer-Extractor  
60 lb Washer-Extractor  
80 lb Washer-Extractor  
100 lb Washer-Extractor  
125 lb Washer-Extractor  
150 lb Washer-Extractor**



***Expert Solutions from the Laundry Experts***

# UniMac®

## Your Solution Starts Here

# 5 key points:

- Labor-Cost Savings
- Utility-Cost Savings
- Value For Your Money
- Proven Performance
- Warranty

UniMac has been manufacturing commercial laundry equipment for over 60 years. By now, we know a thing or two about what it takes to cost effectively operate a laundry room. Through the years we have helped our customers to improve working conditions for laundry room staff, lower operating expenses in their department and increase cash flow for their company. Relax, you can count on UniMac to provide the Expert Solution for your particular challenge. That's why we are the Laundry Experts.



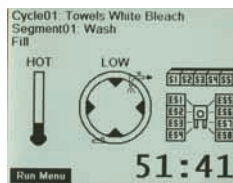
### Labor-Cost Savings

Did you know labor costs eat up 50% of your laundry dollar? Imagine the thousands of dollars you'd save if you could reduce your laundry labor by 30 minutes per day!

UniMac's UWTV Series Washer-Extractor transforms your dream into reality.

- **Four Fast-Fill Water Valves** (instead of the customary two) fill UWTV models much faster, shaving valuable minutes off every cycle.
- Extraction Speeds of **up to 300 G-Force** – that's 2-3 times the G's of most machines – aid UniMac's UWTV models in reducing the amount of moisture left in washloads. This greatly reduces drying time saving significantly on labor costs.

- **Advanced Computer Control, UniLinc™** boldly displays cycle time remaining to more efficiently utilize labor. The easy to use display makes training easy and ensures the proper cycles are used each time. The management reports provide time and date stamps of each cycle, including the idle time between cycles. The UniLinc™ control is your laundry partner to lower labor costs.



- A **Rapid Jetspray Rinse** saves nearly three minutes on every rinse step! The spray rinse pulls water through linens, allowing it to drain immediately, rather than cycling through the time consuming fill, agitation and drain phases of the traditional bath rinse. This is one of UniMac's most impressive timesaving features.



- The **Overnight Delayed Start** feature gives you a 30-minute head start each day! By loading the washer and selecting the programmable delayed start cycle, your linens will be ready for the dryer immediately the next morning.
- The UWTV models can be programmed with the shortest wash cycles in the industry. When the **four Fast-Fill Water Valves** are combined with **Rapid Jetspray Rinse, Smart Drain**, and our end of **Cycle Rotation Sensor**, you will cut laundry operating time. Saving time will save labor costs.

## Utility-Cost Savings

Utility costs account for approximately 10% of your laundry dollar. By selecting laundry equipment with advanced features, utility costs can be controlled. If a typical laundry facility processes around 4,000 cycles per year, even small savings per cycle will really add up. UniMac's UWTV series has the solution for controlling your utility costs:

### Electricity

Save 40% or more with our state-of-the-art **Frequency Drive System**. It saves money by gradually and efficiently ramping up to extraction speed. You'll also save electricity with our industry-leading short cycle times created with our **Rapid Jetspray Rinse**, four Fast-Fill Water Valves and **Smart Drains**.

### Gas

Dryer time is shorter due to 300 G-Force super high extraction speeds. By operating your dryer less each day, you reduce your **cost of energy by \$100's per year**.

### Water

Large capacity cylinders help you reduce the number of wash cycles per day...per month...per year! These savings can be as much as 10% under competitors' models!



## Value For Your Money

Cost and value are not synonymous. Often the lowest-priced laundry equipment ends up being the most expensive to own in terms of maintenance, performance and ease-of-use. One way of measuring a washer-extractor's value is to take a look at **standard features**.

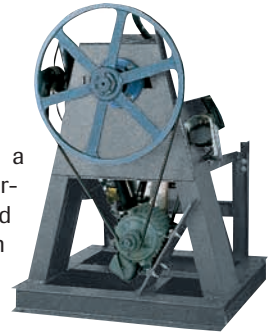
UniMac is committed to providing you with the maximum value. Many of the features considered **"add-ons" by our competitors** are standard on our UWTV washer-extractors.

Important standard features include:

- Temperature Controlled Fill
- Thermal Cool Down
- Overnight Soak
- Overflow Rinse
- Stainless Steel Construction
- Brass Fill Valves
- Polypropylene Chemical Supply Dispenser
- Programmable Drive System
- Two Wash Speeds (TV Models)
- Laundry Operation Reports

## Proven Performance

You want your decision to be a lasting one, so choose a washer-extractor that is durable and virtually maintenance-free, with a proven performance history. You won't find another washer-extractor with the durability and performance record of UniMac's UWTV series.



Our heavy-duty **Gamma A-frame**, made of **4" H-beam**, has been the industry model of strength and durability. Our low maintenance **V-Belt Drive** provides high-efficiency, dependability and smooth operation, without unnecessary transmissions or clutches. With fewer moving parts, our drive system requires less maintenance.

UniMac's expertise is the result of over 60 years as the leader in technological innovation. We've led the industry in developing technologically advanced solutions, such as **Microprocessor Controls, Frequency Drive System, Rapid Jetspray Rinse, Super-high G-Force and two wash speeds**.

We receive high marks from our customers and peers within the commercial laundry industry, and most agree: UniMac is the industry leader because we've set the standards for quality with products guaranteed to lower costs and constructed to perform every time!



## Warranty

Our warranty is your insurance policy. We demonstrate our confidence in our UWTV by giving you the best warranty in the industry. UniMac provides a **five-year warranty on the frame, basket, shaft, bearings and seals** if failure or breakage should occur during normal operation due to defects in material or workmanship. A full three-year warranty also is issued to the original purchaser on all other parts.

# Specifications

	<b>UW35</b> 2-spd*	<b>UW35</b> 3-spd*	<b>UW35</b> TV: 7-spd	<b>UW60</b> 2-spd*	<b>UW60</b> 3-spd*	<b>UW60</b> TV: 7-spd	<b>UW80</b> TV: 7-spd	<b>UW100</b> TV: 7-spd	<b>UW125</b> TV: 7-spd	<b>UW150</b> TV: 7-spd
Control Options	B, P	P	P	B, P	P	P	P	P	P	P
Capacity - lb (kg)	35 (16)	35 (16)	35 (16)	60 (27)	60 (27)	60 (27)	80 (36)	100 (45)	125 (57)	150 (68)
Cylinder Diameter - in (mm)	26 1/4" (667)	26 1/4" (667)	26 1/4" (667)	32" (813)	32" (813)	32" (813)	36" (914)	36" (914)	42" (1067)	43" (1093)
Cylinder Depth - in (mm)	18 3/8" (467)	18 3/8" (467)	18 3/8" (467)	20" (508)	20" (508)	20" (508)	21" (533)	27" (686)	24" (610)	27 13/16" (706)
Cylinder Volume - cu. ft. (liters)	5.76 (163)	5.76 (163)	5.76 (163)	9.31 (264)	9.31 (264)	9.31 (264)	12.4 (350)	15.9 (450)	19.24 (544)	23.38 (662)
Height - in (mm)	55 1/2" (1410)	55 1/2" (1410)	55 1/2" (1410)	64 1/2" (1638)	64 1/2" (1638)	64 1/2" (1638)	68 1/2" (1740)	68 1/2" (1740)	72" (1829)	79" (2007)
Width - in (mm)	32 1/2" (826)	32 1/2" (826)	32 1/2" (826)	36 5/8" (930)	36 5/8" (930)	36 5/8" (930)	41 1/2" (1054)	41 1/2" (1054)	48" (1219)	50" (1270)
Depth - in (mm)	38 1/4" (972)	38 1/4" (972)	43 5/8" (1108)	45" (1143)	45" (1143)	45" (1143)	51 1/2" (1308)	54 1/2" (1384)	58" (1473)	63" (1600)
Door Opening Size - in (mm)	14 3/8" (364)	14 3/8" (364)	14 3/8" (364)	17 1/2" (445)	17 1/2" (445)	17 1/2" (445)	17 1/2" (445)	17 1/2" (445)	20" (508)	24 3/4" (629)
Door Bottom To Floor - in (mm)	23 3/4" (603)	23 3/4" (603)	23 3/4" (603)	28 1/4" (718)	28 1/4" (718)	28 1/4" (718)	29" (737)	29" (737)	29" (737)	32" (813)
Motor Size - HP (kW)	1.8 (1.3)	3 (2.2)	3 (2.2)	3 (2.2)	3.5 (2.6)	5 (3.7)	7.5 (5.6)	7.5 (5.6)	10 (7.5)	10 (7.5)
Gentle Speed - RPM	N/A	N/A	26	N/A	N/A	26	26	26	26	23
Wash Speed - RPM	50	45	42	44	42	40	40	40	37	36
Distribution Spd - RPM	N/A	75	83	N/A	67	71	71	70	62	61
Medium Speed - RPM (G-Force)	N/A	N/A	328 (40)	N/A	N/A	305 (42)	325 (54)	325 (54)	260 (40)	262 (42)
High 1 Extract - RPM (G-Force)	504 (95)	597 (133)	534 (106)	465 (98)	561 (143)	483 (106)	456 (106)	456 (106)	422 (106)	417 (106)
High 2 Extract - RPM (G-Force)	N/A	N/A	613 (140)	N/A	N/A	555 (140)	524 (140)	524 (140)	485 (140)	512 (160)
High 3 Extract - RPM (G-Force)	N/A	N/A	898 (300)	N/A	N/A	813 (300)	766 (300)	766 (300)	580 (200)	701 (300)
Drain Diameter - in (mm)	2 3/8" (60)	2 3/8" (60)	2 3/8" (60)	3" (76)	3" (76)	3" (76)	(2 ea.) 3" (76)	(2 ea.) 3" (76)	(2 ea.) 3" (76)	(2 ea.) 3" (76)
Steam Connection - in (mm)	1/2" (13)	1/2" (13)	1/2" (13)	1/2" (13)	1/2" (13)	1/2" (13)	1/2" (13)	1/2" (13)	3/4" (19)	3/4" (19)
Water Inlet Connection - in (mm)	3/4" (19)	3/4" (19)	3/4" (19)	3/4" (19)	3/4" (19)	3/4" (19)	3/4" (19)	3/4" (19)	(2 ea) 1" (25)/ (2 ea) 3/4" (19)	(2 ea) 1" (25)/ (2 ea) 3/4" (19)
Net Weight - lb (kg)	750 (341)	750 (341)	1030 (468)	1136 (515)	1229 (557)	1300 (590)	1730 (785)	1770 (805)	2420 (1100)	2970 (1347)
Agency Approvals**	ETL, ETLc	ETL, ETLc	ETL, ETLc, CE	ETL, ETLc	ETL, ETLc	ETL, ETLc, CE	ETL, ETLc, CE	ETL, ETLc, CE	ETL, ETLc, CE	ETL, ETLc, CE

\* Two-and three-speed washers may not include all of the features within the brochure.

\*\* Agency approvals may vary depending on configuration.

Consult factory for details. Standard domestic voltage 208-240/60/3. 230V/50Hz/1&3 phase and 380V/50Hz/3 phase units are available. All CE approved models available in 50-cycle. Contact your distributor for specific models available with CE. For electrical specifications, circuit breaker requirements and full load amperages, see your authorized UniMac distributor. Manufacturer strongly recommends using a circuit breaker instead of fuses. Use 3-pole circuit breakers for 3-phase machines.

Due to continuous product improvements, design and specifications subject to change without notice. The quality management systems at all Alliance Laundry Systems manufacturing facilities are registered as ISO 9001:2000 compliant.

© Copyright 2007 Alliance Laundry Systems LLC

 Printed in the U.S.A.

Printed on paper manufactured with virgin pulp from certified sources and a minimum of 10% post-consumer recovered fiber.



[www.uniwash.com](http://www.uniwash.com)

Alliance Laundry Systems  
Shepard Street, Ripon, WI 54971 Telephone: 1-800-587-5458

